

Trauma and Resilience in the Line of Duty

Wednesday, October 19th | 10:15 AM



Trauma and Resilience in the Line of Duty

Telling the story and changing the narrative of Public Safety Post Traumatic Stress Disorder. (PTSD).

As told by ...

- **Lena Gould** – LMCIT-Sr. Data Analyst
- **Corporal Ashley Wilson** - Gwinnett, GA. Police Department
- **Lora Setter** – LMCIT -Public Safety Program Coordinator





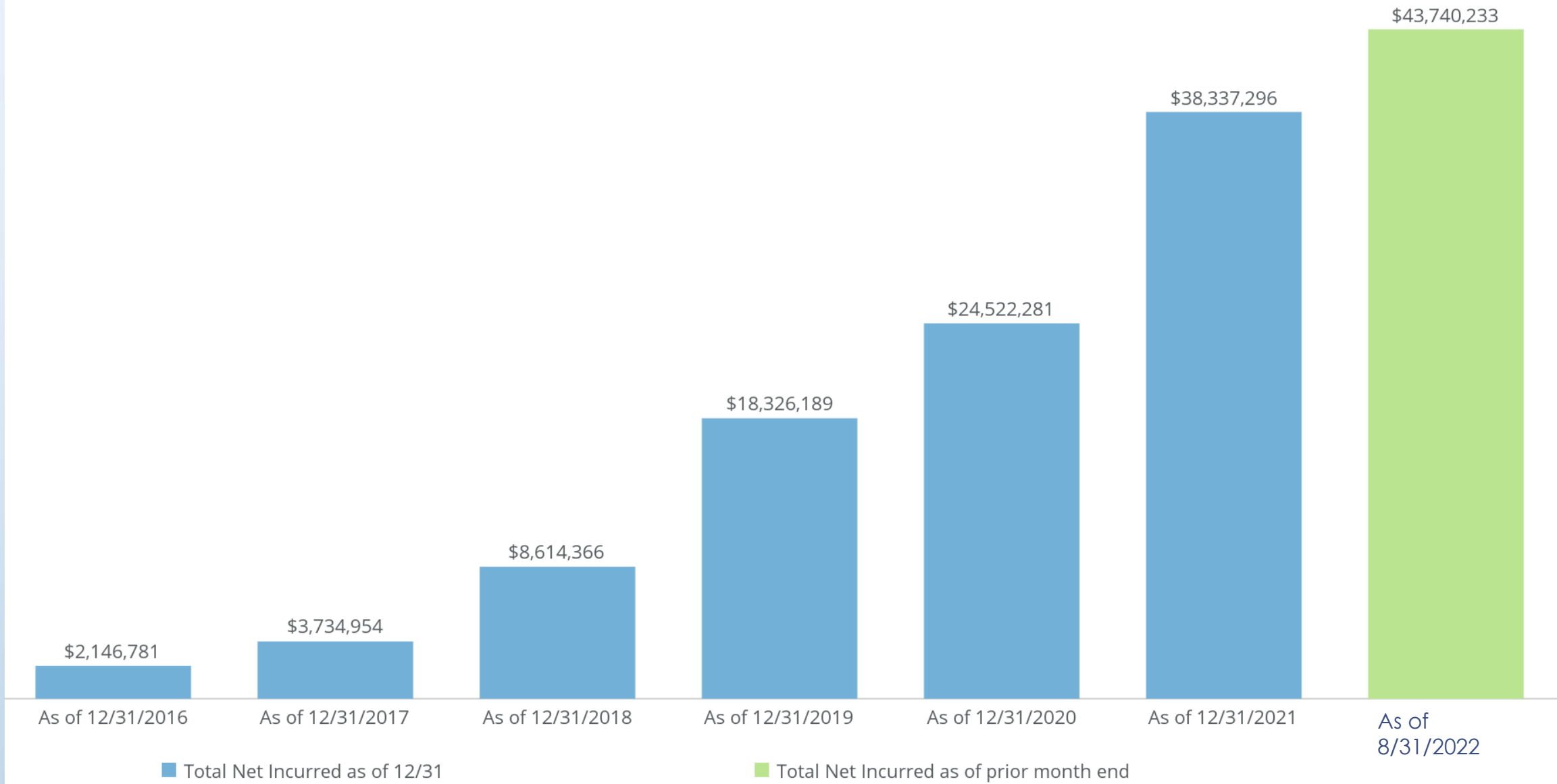
Our story begins
with
the data

▶ 183.102

▶ 154.178

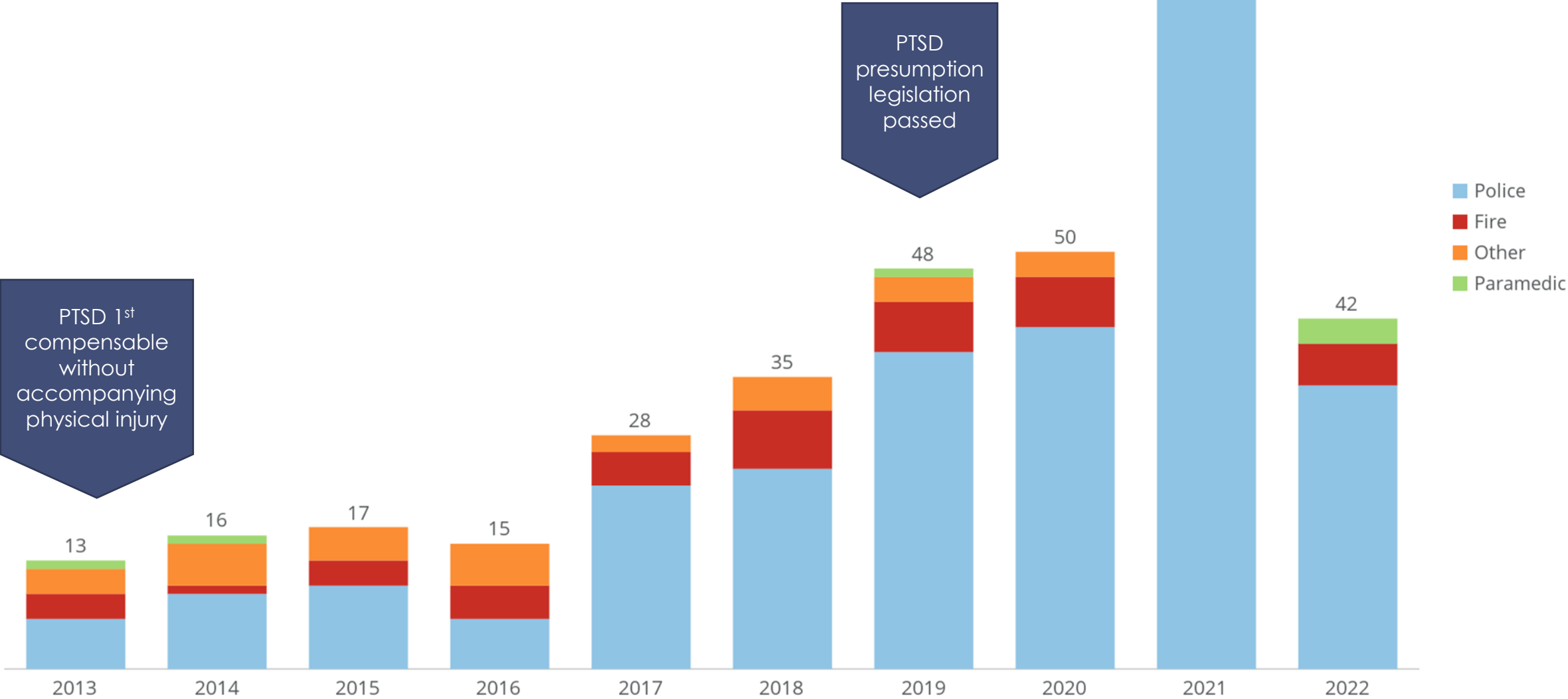
▶ 245.5

PTSD Total Net Incurred Over Time

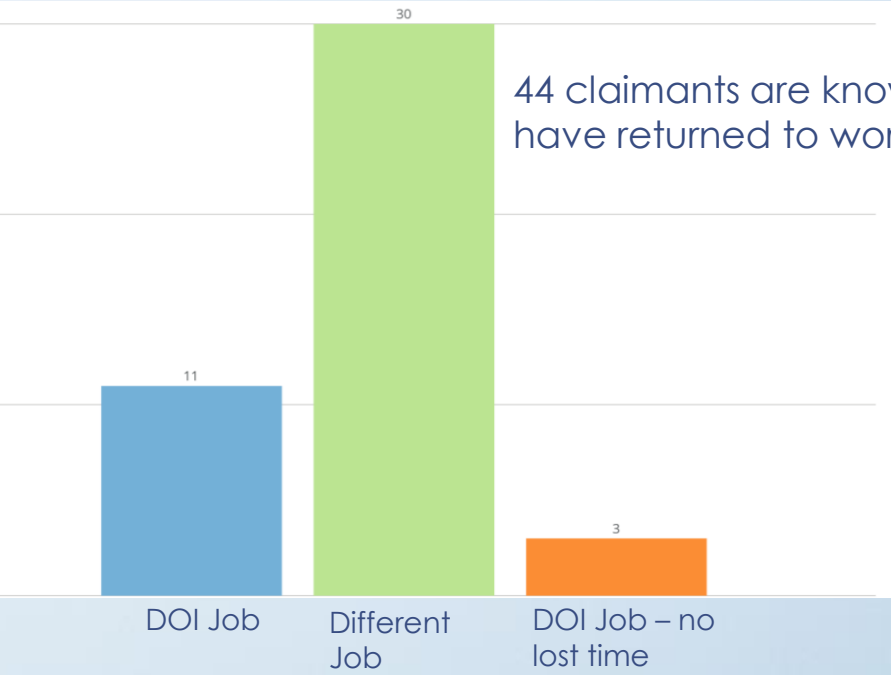
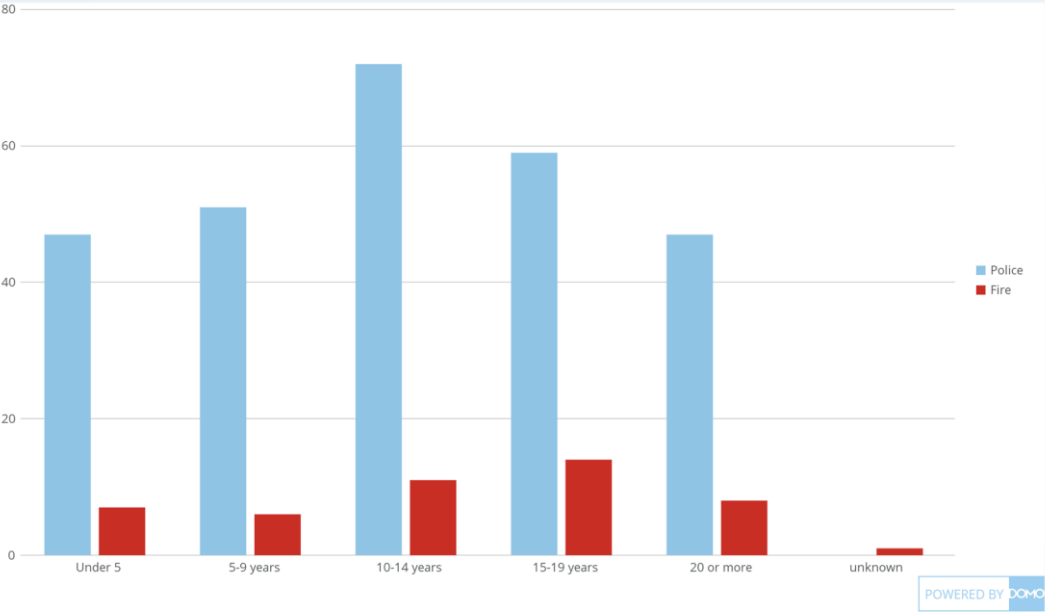


PTSD Claims by Year Incurred

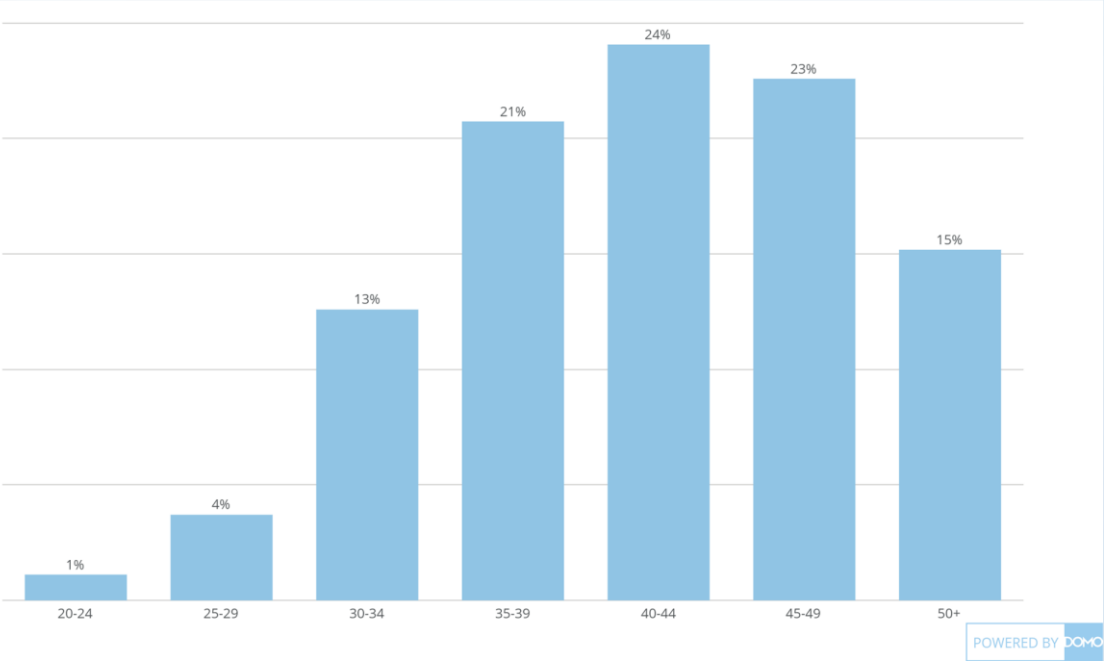
359 Total



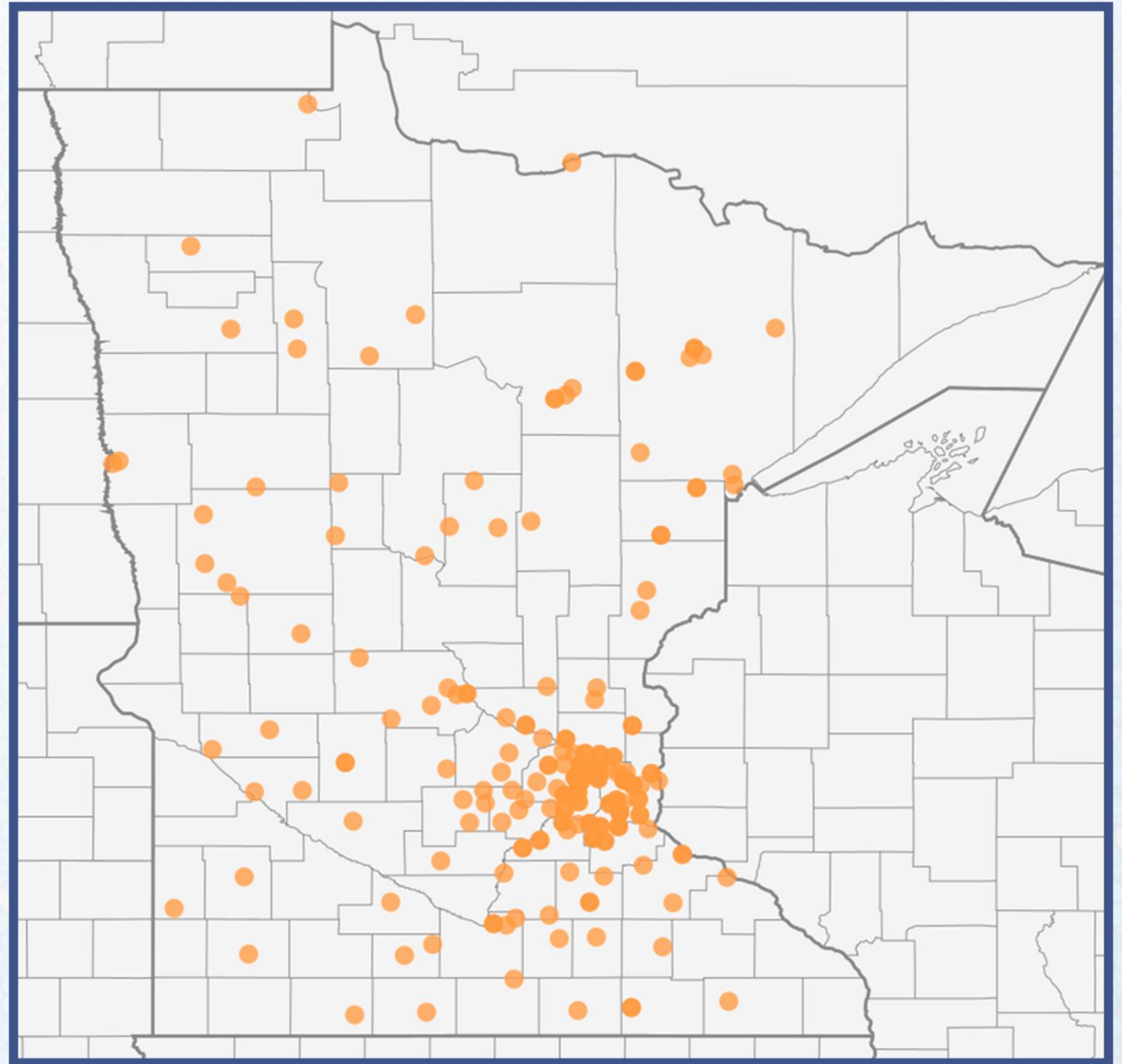
13 Average of Years from hire to loss



42 Average of age at loss

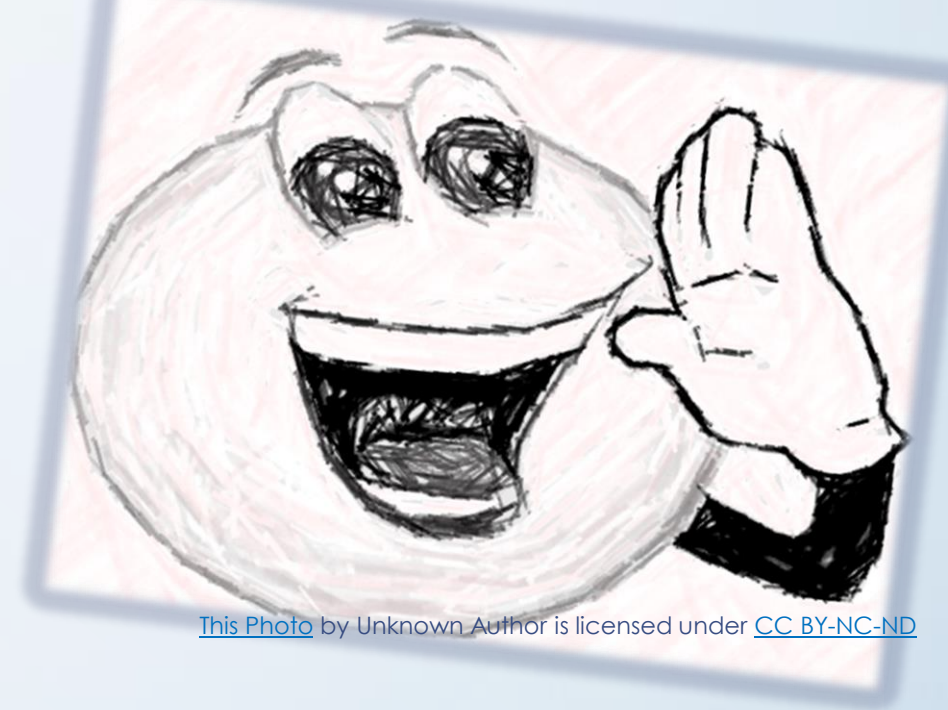


Claims Map



What can the data tell us?

- Analyzing the data alerted us of the story
 - Compensable beginning in 2013
 - Claims frequency grew beginning in 2017
 - Presumption legislation passed in 2019
- Digging into the data helps us frame the narrative and focus our loss control efforts
 - What job classes are filing claims?
 - Where are claimants in their career?
 - Other commonalities? Geographic differences?
 - Are people returning to work?



The story continues...a
personal PTSD experience as
told by-

Corporal Ashley Wilson
Gwinnett County Police Department





Georgia officer fatally shot while investigating suspicious vehicle

Authorities charged one teen, while the second was killed after he attacked police with a lawnmower blade.

Duty Death: Antwan Toney
End of Service: 10/20/2018

Data Dig



Legislative Journey



[This Photo](#) by Unknown Author is licensed under [CC BY-SA](#)



[This Photo](#) by Unknown Author is licensed under [CC BY-SA](#)

**The story
continues...**

**Helping Those
That Help Others**



Rev up Resources



Tanks vs Life Rafts



Rewriting the ending-



<https://www.lmc.org/ptsd-mental-health-toolkit/>